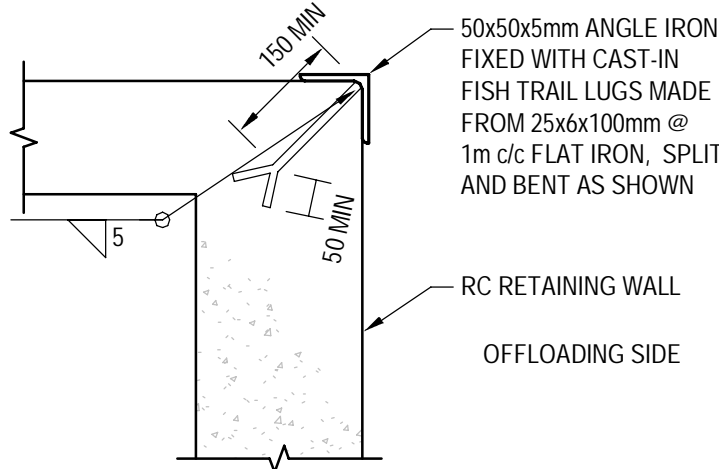


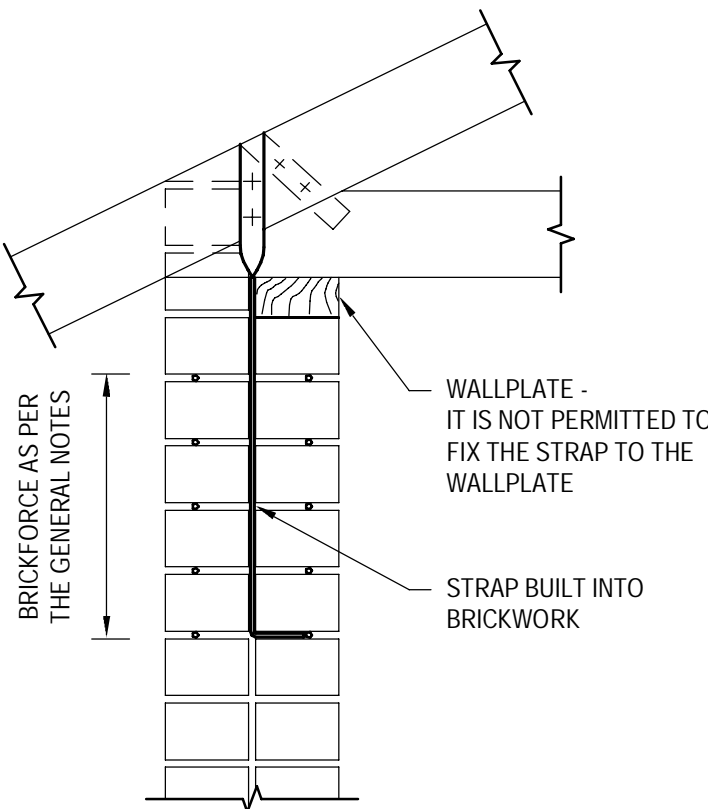
DETAIL TO BE USED WHEN STRAP IS FURTHER THAN 200mm FROM TRUSS
1:20

NOTES ON ANGLE IRON EDGE PROTECTION:
IF VERTICAL CORNERS ARE PRESENT, THE EDGE PROTECTION IS TO BE CAST IN VERTICALLY TO PROTECT THE CORNERS. ANGLE IRON IS TO BE WELDED AT CORNERS AND WHERE A VERTICAL ANGLE MEETS A HORIZONTAL ANGLE.

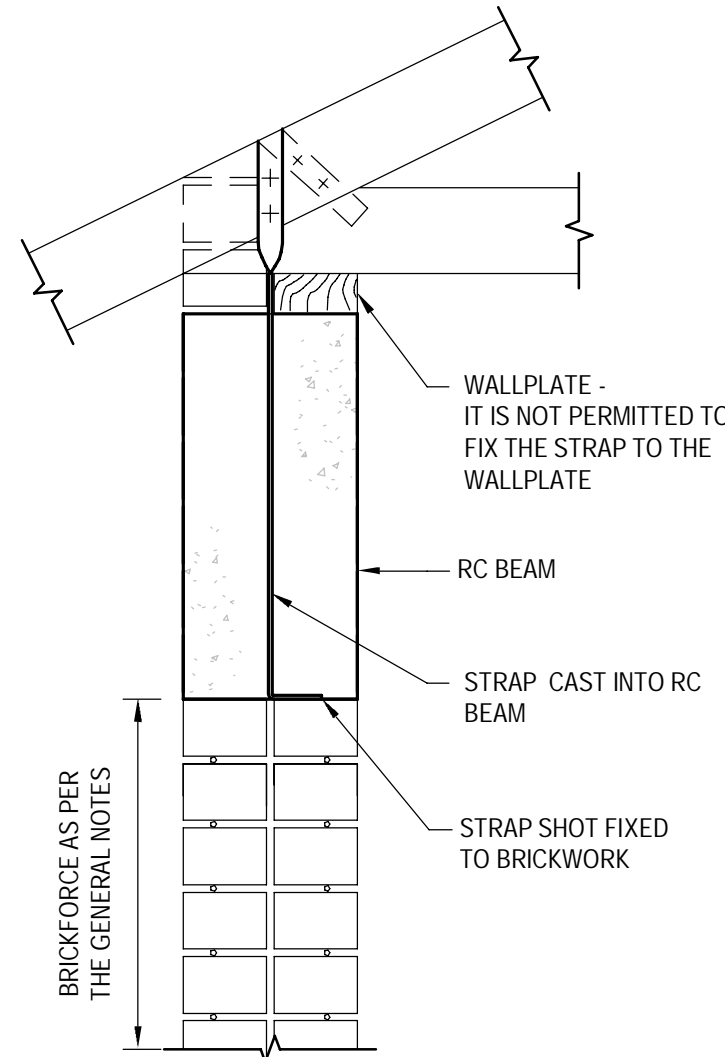


TYPICAL EDGE PROTECTION DETAIL USED AT ALL OFFLOADING AREAS
1:10

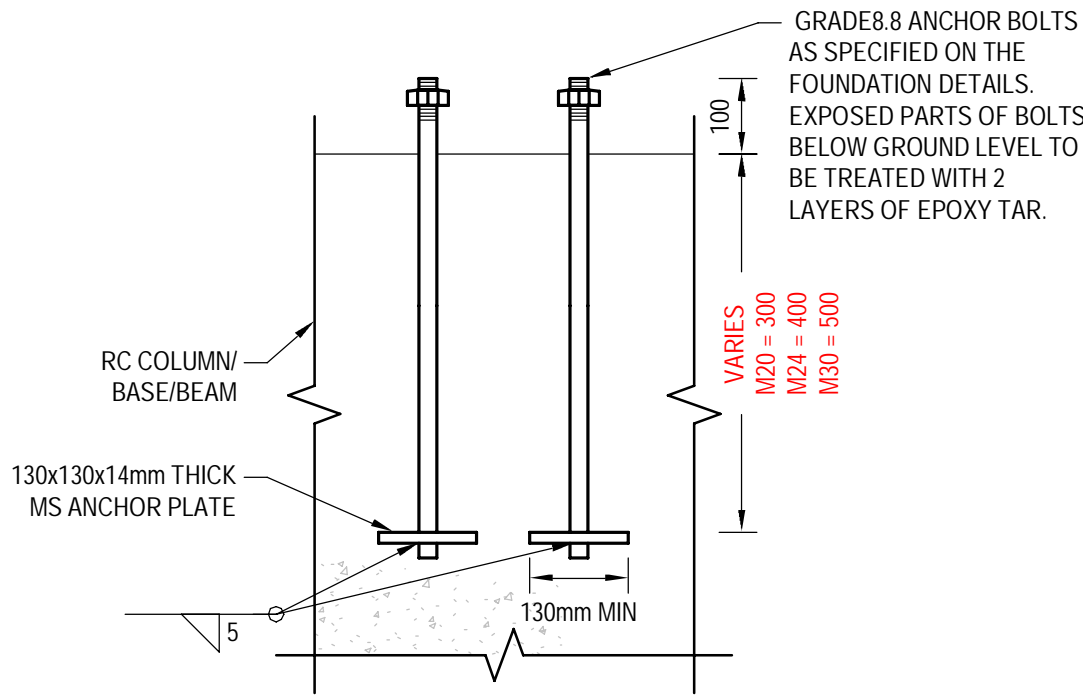
NOTE:
25mm x 1mm 'eCo' PUNCHED STRAP MAY BE USED FOR HEAVY TILE ROOFS OR LIGHT ROOFS UP TO 8m SPAN IN LOW WIND RISK BUILT UP AREAS.
FOR HEAVY ROOFS, TWO STRANDS OF 4mm GALVANISED STEEL WIRE MAY BE USED IN ACCORDANCE WITH SANS 10400 KK13.3 FOR ALL LIGHT ROOFS OTHER THAN ABOVE.
USE 30mm GALVANISED STEEL STRAP IN ACCORDANCE WITH SANS 10400 KK13.3



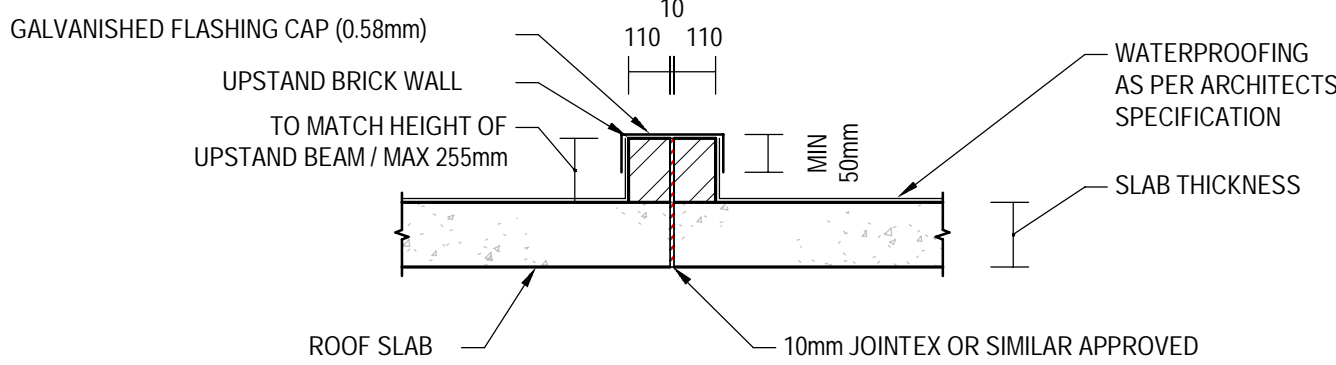
ROOF STRAP HOLDING DOWN DETAIL
1:10



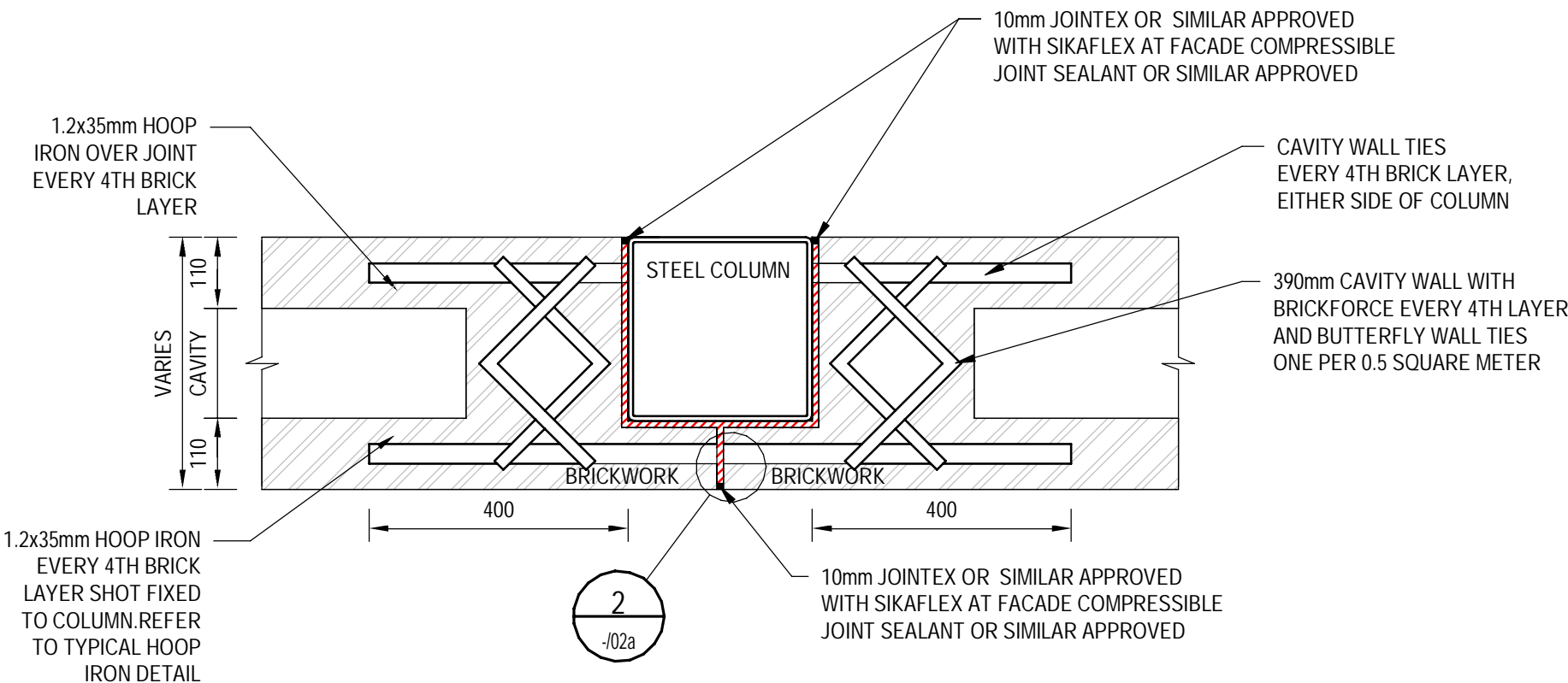
ROOF STRAP HOLDING DOWN DETAIL
1:10



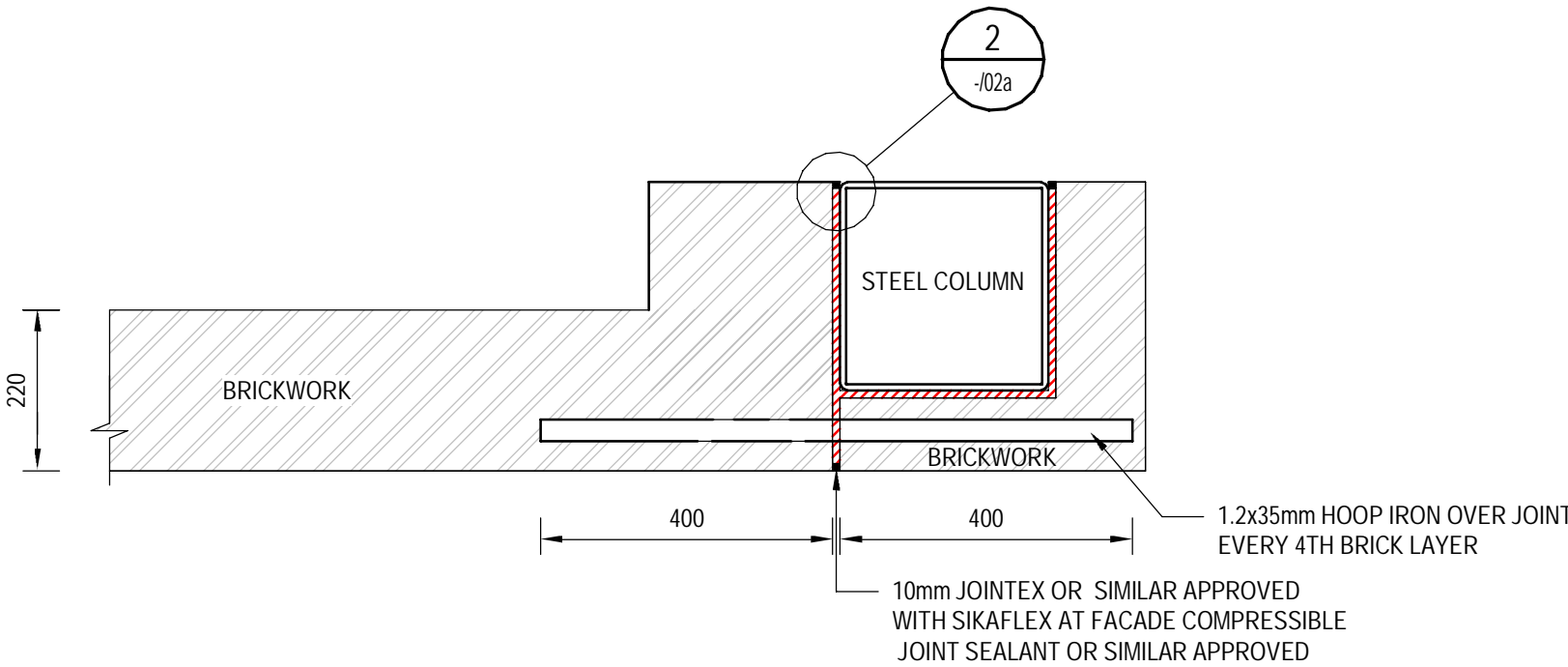
TYPICAL HOLDING DOWN BOLT DETAIL
1:10



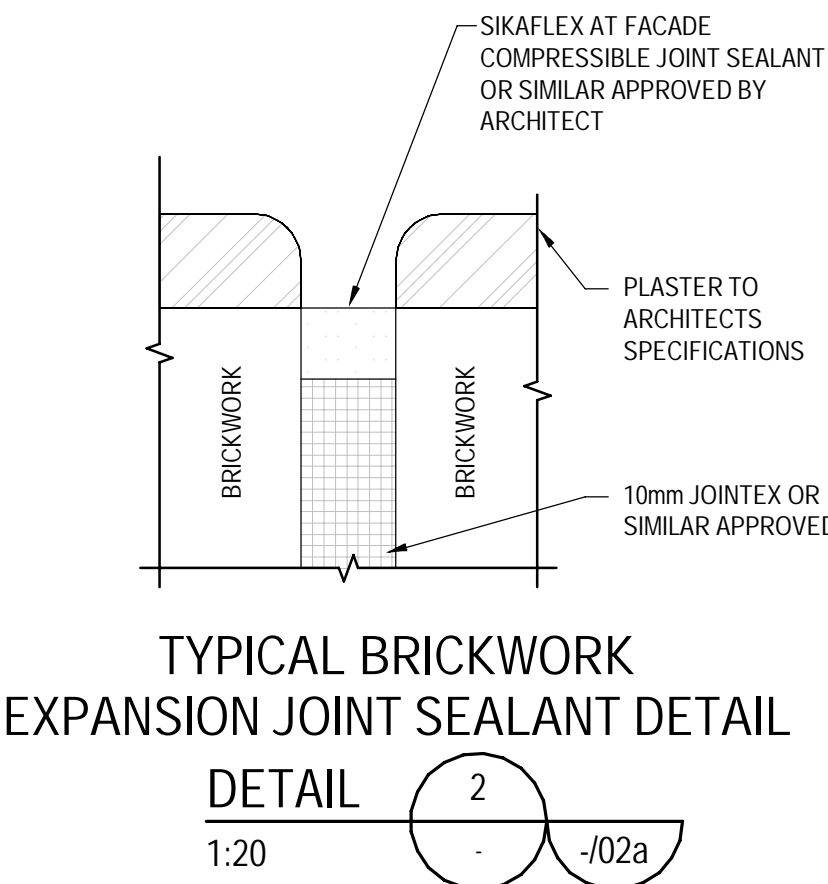
TYPICAL SECTION THROUGH EXPANSION JOINT IN ROOF SLAB
1:20



TYPICAL BRICKWORK (CAVITY WALL) TO STEEL COLUMN DETAIL
1:10



TYPICAL BRICKWORK TO STEEL COLUMN DETAIL
1:10



TYPICAL BRICKWORK EXPANSION JOINT SEALANT DETAIL
1:20

DISCLAIMER

IF CONSTRUCTION DRAWINGS ARE ISSUED UNSIGNED, THE MASTER WITH THE ORIGINAL SIGNATURE OF APPROVAL WILL BE HELD AT THE ZUTARI OFFICE OF THE APPROVER

ZUTARI
IMPACT. ENGINEERED.

ARCHITECT



architects/urban designers

REV	DATE	REVISION DETAILS	APPROVED
0	31/05/2023	ISSUED FOR CONSTRUCTION	S.PRETORIUS

SCALE	SIZE	FOR CONSTRUCTION
As indicated	A1	
DRAWN	APPROVED	DATE
D VISAGIE		
DESIGNED	J GREEFF	
REVIEWED	S PRETORIUS	Pr Tech Eng 201470298

PROJECT
ROYAL BAFOKENG SPORTS COURT

TITLE
GENERAL DETAILS
SHEET 3 OF 3

DRAWING NUMBER	PROJECT No	WBS	TYPE	DISC	NUMBER	REV
1002403	SPCU	DRG	SS	0002c	0	