

Impala Platinum Limited (“Impala”)

Request for Supplier Information (RFI)

Ref No: Hex River info

Require information from Suppliers related to the technical detail as described below:

1. BACKGROUND

The Hex River fault is a major strike-slip shear zone that strikes NNE-SSW, with an average dip of 85° to the east at the Impala property, at No.1, 16 & 17 Shafts. The displacement on the fault is mainly horizontal, and the fault is defined by a central core zone approximately 10 meters wide, that will dramatically vary for each raise line. The fault has an expected vertical displacement of 2.5 meters, which will also vary (not dramatically) for each raise line. The core zone is expected to be highly fractured, extensively sheared, and mineralogically altered/bleached, with secondary minerals (serpentinite, chlorite and/or calcite) present in the fractures and/or joints. It contains volumes of saline water and methane.

A zone of sympathetic faulting can be expected on both sides (meters away) of the central core fault. This should not be seen as the Hex River fault, and the wider group or zone of faults and jointing should rather be called the Hex River fault zone. This zone can be up to 40 meters wide.



Figure 1: Hex River Pyroxenite intersection

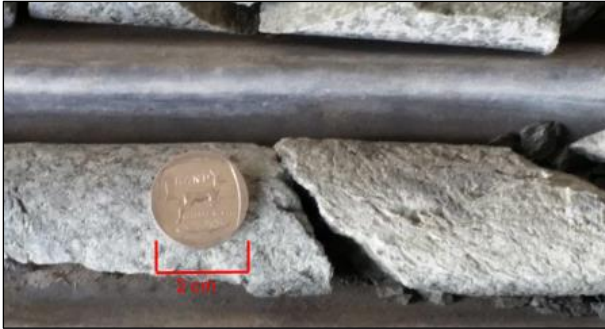


Figure 2: Shearing observed

2. RISK ASSOCIATED WITH HEX RIVER

The Hexriver fault is associated with poor ground conditions as well as flammable gases and water intersections. These intersections will not only occur in the central core zone of the fault but could also be intersected some distance away from the fault which poses a high risk for gas pockets and water pockets intersections whilst developing towards the fault.

The hazards can be summarised as follows:

- Poor ground conditions
- High methane concentrations have been encountered.
- Low water inflows with temperatures up to 43°C and occasionally under high pressure.
- Concentrated chlorine levels up to 6000ppm in the water (chloride levels as high as 33000mg/l (chloride in sea water is 19000 mg/l)).



Figure 3: Chlorine levels when not treated

3. MINING METHOD

The current mining method used to mine through the Hex River is based on conventional mining methods, however, **Impala is interested in potential faster and safer ways to develop and or mine through the Hex river fault intersection.**

Proven alternative methodologies will be considered and these alternative methodologies are required to be detailed within annexure B.

4. MINE LAYOUT AT NO. 16 SHAFT

The mine layout for Merensky and UG2 indicating the fault zone can be seen in figures 4 & 5 below. The amount of footwall drives and raise lines to traverse through the fault zone can be seen in the below figures.

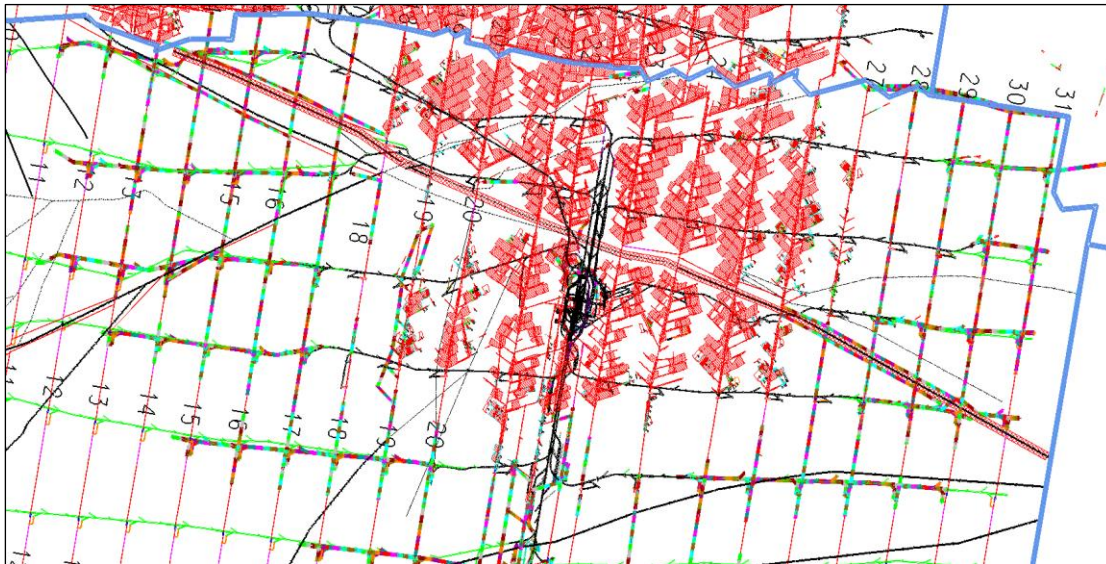


Figure 4: Merensky Reef Mining Plan (Hex River – Red line in middle of shaft)

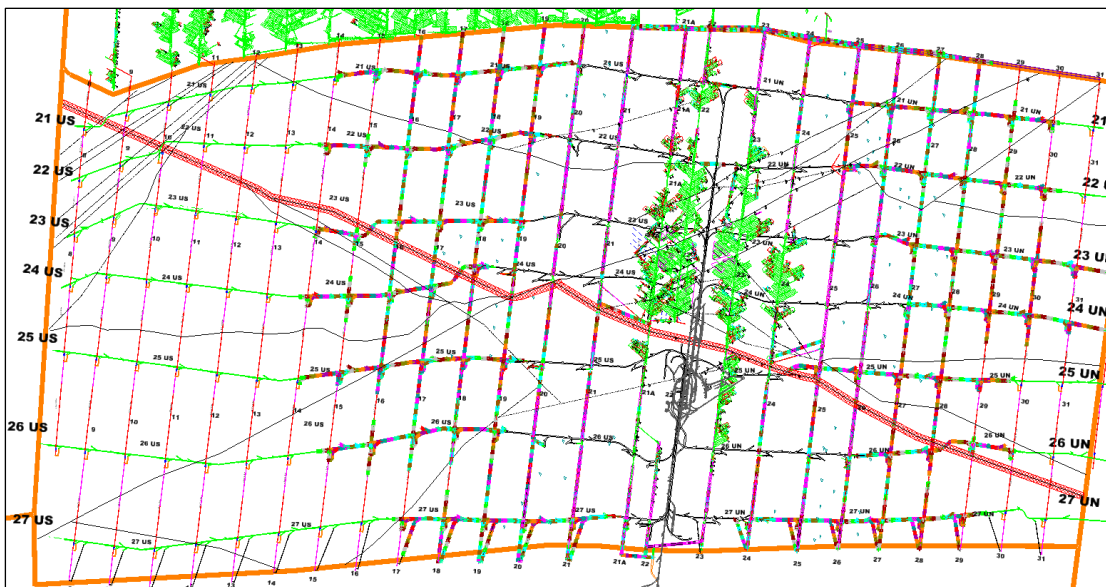


Figure 5: UG2 Reef Mining Plan (Hex River – Red line in middle of shaft)

5. TECHNICAL INFO REQUEST FOR THIS RFI

The Hex River Fault Zone must be traversed safely, kept open for the life of mine and not unduly delay the production build-up of the shaft. As previously stated:

- **Impala is interested in potential faster and safer ways to develop and or mine through the Hex river fault intersection.**
- **Proven alternative methodologies will be considered and these alternative methodologies are required to be detailed within annexure B**

The following detail to be submitted as per the requirements contained in Annexure B.

5.1 The Contractor is required to submit a detailed document from the site where this type of work was previously performed. The document must provide details on the methodologies followed by your company on:

- Mining methods
- Cleaning method
- Support methodology

A methodology can typically include the geotechnical drilling and cementation before traversing, or only include the mining activity.

5.2 The document shall include the contact detail of the General Manager or Mine manager where this work was previously performed i.e. Email address as well as Telephone or Mobile numbers in order for the Technical team to check the references.

5.3 Compulsory: All the MSDS certification on products and or chemicals used by your company to be submitted for review in terms of environmental requirements.

6. SPECIAL REQUIREMENTS TO CONSIDER WHILE WORKING ON IMPALA

The CONTRACTOR shall comply with the Mine Health and Safety Act.

The correct PPE must be worn at all times according to Impala Code of Practice.

The CONTRACTOR to establish and maintain a data system on-site containing all relevant qualifications of employees, competency letters, risk assessments, working methods, tool checklists, and all other safety-related procedures that manage the activities of their employees. This data system to be available for inspection by the PRINCIPAL at all times.

Artisans must have a valid section 13/12B trade certificate according to the Manpower Training Act (56 of 1981) or a 26(D) of the Skill Development Act (97 of 1995) with a full POB of experiential training prior to trade test.

In confirming your interest in potentially participating in the above process, you are required to submit the following compulsory documentation as set out below:

7. COMPULSORY DOCUMENTATION

- 7.1 Company Profile
- 7.2 Legal compliance documentation

- 7.2.1 The company's registration certificate (CIPC document)
 - 7.2.2 Share certificates and ID documents
 - 7.2.3 Valid Tax Clearance certificate
 - 7.2.4 Valid Workmen's Compensation Document
 - 7.2.5 Valid SANAS BEE certificate or Affidavit
 - Should your Sworn Affidavit or SANAS accredited rating agency's BBBEE certificate NOT indicate your Women and/or Youth Owned and Controlled status of $\geq 51\%$, please include a separate Sworn Affidavit to that effect signed by a Commissioner of Oaths as well as the Youth and/or Woman Owned and Controlled shareholder inclusive of your shareholder certificates and/or CK2 to substantiate said ownership credentials.
 - **Should the TENDERER supply an affidavit, the following is mandatory:**
 - Affidavit must be provided on the correct template and must state the enterprise name and whether it is an exempted micro enterprise or qualifying small enterprise
 - It must be signed by the owner/director of the business with the name and ID number clearly stated
 - It must be stamped and dated by a Commissioner of Oaths
 - It must state the annual turnover
 - It must state the financial period that the turnover relates to and must be the latest financial period
 - It must state the black ownership percentage and black women owned percentage
 - It must state the associated empowerment level which must be in accordance with the DTI defined rules
 - Level 1 = 100% black owned
 - Level 2 = 51% black owned
 - Level 4 = Less than 51% black owned
- 7.3 Completed Annexure A (Suppliers detail)
 - 7.4 Completed Annexure B (Technical/commercial detail)
 - 7.5 Completed Annexure C (Non disclosure agreement)

Please note:

Failure to submit the requested documentation will result in your exclusion from any potential forthcoming tender resultant from this RFI.

8. SUBMISSION DETAILS

Please submit documentation as required electronically as follows:

Reference: Hexriver info
Email address: Impala.Tenders@implats.co.za
Closing date: by no later than 12h00 on 27 August 2020

Omissions or late delivery of the above required compulsory documentation will lead to disqualification of your company profile from the process.

Do not submit any rates or prices at this stage – Impala will only evaluate the safer and faster methodologies.

To qualify for the next phase of the process, Impala will take the following into consideration:

- Minimum technical requirements as set out in Annexure B
- BEE and Tier Status (preference will be given to >51% Black / Women / Youth owned and controlled suppliers);
- Legal compliance of the Supplier

Impala reserves the right to determine which companies proceed to the next phase in the process and it reserves its' rights not to furnish reasons in support of its decision to permit/not permit a company to proceed to the next phase.

Information for reference purposes

Definition of Woman-owned and Youth owned:

“Women-owned and controlled company”: refers to an entity in which South African women hold at least 51% of exercisable voting rights and economic interest.

“Youth owned and controlled company”: youth, for the purposes of the mining charter, refers to (a) young South African citizens between the ages of 18 to 35 years based on national or provincial demographics; or (b) a juristic person managed and controlled by a person/s contemplated in paragraph (a) where the persons, collectively or as a group, own and control majority of the issued share capital or members' interest; and are able to control the majority of the members' vote.

Joint Ventures, Consortiums and Interested Parties:

- a) Impala prefers incorporated Joint Ventures (“JV”) structures. Should the interested parties persist in replying to this RFI as a JV or a Consortium, Interested Parties must:
- Clearly indicate the respective JV ownership percentages as well as the structure of the proposed joint venture and include the governing board of the Joint Venture.
 - Submit a BBBEE Certificate/Affidavit (where applicable) in respect of such JV partners as well as the ownership percentage split to be included in the “RFI” to ensure a fair and equitable process.
 - Provide copies of the JV Agreement and Shareholding Agreement for Impala’s perusal, detailing the specifics of the Joint Venture arrangement relevant to any potential future tender.
 - Be aware that Impala reserves the right to conduct a company assessment at any stage on each of the individual JV entities and quantitatively as well as qualitatively audit the same.
 - Provide all of the requirements indicated in point 4 above for each JV Company or Consortium.
 - Provide a combined SANAS certificate for the JV/Consortium.

Please note:

Failure to submit the requested documentation will result in your exclusion from any potential forthcoming tender resultant from this RFI.

Ref No: Hex river Info - Annexure A:

A.1 SUPPLIERS DETAIL:

Supplier Name:	
Contact Person:	
Address:	
Telephone Number:	
Cell Number:	
Email Address:	

Please ensure that the following documentation is attached:

Question	Yes	No	Comment
Did you attach your company profile?			
Did you attach your valid Affidavit/BEE certificate?			
Is your company >51% women-owned and controlled? (If yes, please submit your shares certificates and ID documentation of your shareholders)			
Is your company >51% youth-owned and controlled? (If yes, please submit your share certificates and ID documentation of your shareholders)			
Did you attach your CIPC document?			
Did you attach your Tax Clearance certificate?			
Did you attach your Workmen's Compensation document?			
Are you entering into a JV or Consortium?			
Proof of residence (Kgosana Letter or letter from local municipality)			

Please provide evidence of the following information:

A.2.1 Are you a Tier 1 supplier?

Bafokeng Company – Kgosana Letter	
Meriteng, Seraleng, Freedom Park – Proof of residence	

Please attach proof of either a valid Kgosana Letter or proof of residence with the RFI Submission.

A.2.2 Are you a Black Owned >51% supplier?

Bafokeng Company – Kgosana Letter	
Meriteng, Seraleng, Freedom Park – Proof of residence	

Please attach proof of either a valid affidavit or BEE certificate with the RFI submission.

Ref No: Hex river Info - Annexure B:

TECHNICAL INFORMATION:

PLEASE NOTE FAILURE TO SUBMIT ALL REQUIRED DOCUMENTS AS SET OUT BELOW WILL LEAD TO DISQUALIFICATION OF YOUR COMPANY.

B.1 METHODOLOGY DOCUMENTATION:

B1.1 The Contractor is required to submit a detailed document from the site where this type of work was previously performed. The document must provide details on the methodologies followed by your company on:

- Mining methods
- Cleaning method
- Support methodology

A methodology can typically include the geotechnical drilling and cementation before traversing, or only include the mining activity.

B.1.2 The document shall include the contact detail of the General Manager or Mine manager where this work was previously performed i.e. Email address as well as Telephone or Mobile numbers in order for the Technical team to check the references.

B.1.3 Compulsory: All the MSDS certification on products and or chemicals used by your company to be submitted for review in terms of environmental requirements.

Please note: Do Not submit any rates or prices at this stage – Impala is only interested in the faster and safer methodology in this submission.

The following question to be completed as well.

B.2 COMPANY TECHNICAL HISTORY AND REFERENCES

B.2.1 Have you conducted underground rehabilitation work in poor ground conditions?

Yes (indicate with a X)	No (indicate with a X)

B.2.2 If yes, provide references and contact details.

Underground rehab in Bad ground conditions	Where was experience obtained	Duration (Years)	Contact Person	Contact details